



COASTAL ALABAMA
COMMUNITY COLLEGE

Placement Guidelines

2024-2025

Updated

April 12, 2024

Effective Fall 2024

ENG101 OR

ENG101C and **ENG099**

WHAT CLASS SHOULD I REGISTER FOR?

ENG101

Did you...

- Score 18 or higher on the ACT English subtest?
- Make an A or B in your approved high school senior English class and have a 2.75 or higher high school GPA?
- Score a 5 or higher on the Accuplacer Placement Test?

If you answered **YES** to any of the previous questions, then you are eligible to register for **ENG101** and do **not** have to register for ENG099.

ENG101C and **ENG099**

Did you...

- Score 17 on the ACT English subtest?
- Make a C in your approved high school senior English class and have a 2.75 or higher high school GPA?
- Score a 4 on the Accuplacer Placement Test?

If you answered **YES** to any of the previous questions, then you are eligible to register for **ENG101** and **ENG099**.

MTH100 OR

MTH100C and **MTH099**

WHAT CLASS SHOULD I REGISTER FOR?

MTH100

Did you...

- Score 18 or higher on the ACT Math subtest?
- Make an A or B in your high school Algebra II (HS2) class and have a 2.75 or higher high school GPA?
- Score at least a 253 (QAS) on the Accuplacer Placement Test?

If you answered **YES** to any of the previous questions, then you are eligible to register for **MTH100** and do **not** have to register for MTH099.

MTH100C and **MTH099**

Did you...

- Score 17 on the ACT Math subtest?
- Make a C in your high school Algebra II (HS2) class and have a 2.75 or higher high school GPA?
- Score at least a 243 (QAS) on the Accuplacer Placement Test?

If you answered **YES** to any of the previous questions, then you are eligible to register for **MTH100C** and **MTH099**.

**Approved high school math classes include Algebra II, Algebra II with Trigonometry, Pre-Calculus, and Calculus.*

***Consult with your academic advisor for appropriate math sequence for your degree plan.*

*MTH 110 and MTH 110C are **not** prerequisites for MTH 112 and MTH 112C.*

MTH110 OR

MTH110C and **MTH109**

WHAT CLASS SHOULD I REGISTER FOR?

MTH110

Did you...

- Score 18 or higher on the ACT Math subtest?
- Make an A or B in your high school Algebra II (HS2) class and have a 2.75 or higher high school GPA?
- Score at least a 253 (QAS) on the Accuplacer Placement Test?

If you answered **YES** to any of the previous questions, then you are eligible to register for **MTH110**.

MTH110C and **MTH109**

Did you...

- Score 17 on the ACT Math subtest?
- Make a C in your high school Algebra II (HS2) class and have a 2.75 or higher high school GPA?
- Score at least a 243 (QAS) on the Accuplacer Placement Test?

If you answered **YES** to any of the previous questions, then you are eligible to register for **MTH110C** and **MTH109**.

MTH112 OR

MTH112C and **MTH111**

WHAT CLASS SHOULD I REGISTER FOR?

MTH112

Did you...

- Score 20 or higher on the ACT Math subtest **and** make an A, B, or C in your high school Algebra II (HS2), Precalculus (HS3), or Calculus (HS4) class and have a 2.75 or higher high school GPA?
- Score at least a 267 (QAS) on the Accuplacer Placement Test?

If you answered **YES** to any of the previous questions, then you are eligible to register for **MTH112**.

MTH112C and **MTH111**

Did you...

- Score 18 on the ACT Math subtest?
- Make an A or B in your high school Algebra II (HS2) class and have a 2.75 or higher high school GPA?
- Score at least a 253 (QAS) on the Accuplacer Placement Test?

If you answered **YES** to any of the previous questions, then you are eligible to register for **MTH112C** and **MTH111**.

**Approved high school math classes include Algebra II, Algebra II with Trigonometry, Pre-Calculus, and Calculus.*

***Consult with your academic advisor for appropriate math sequence for your degree plan.*

*MTH 110 and MTH 110C are **not** prerequisites for MTH 112 and MTH 112C.*

English Placement Chart

Screening Level 1: ACT English Score		Screening Level 2: HS GPA and English Grade		Screening Level 3: ACCUPLACER Writing	
Score*	Placement	GPA/English Grade**	Placement	Score*	Placement
Below 17	See SCREENING LEVEL 2	Below 2.75 GPA	See SCREENING LEVEL 3	0 – 3	ENR 098
17	ENG 101C with ENG 099	2.75 or higher GPA and "C" in English IV	ENG101C with ENG 099	4	ENG 101C with ENG 099
18 or higher	ENG 101	2.75 or higher GPA and "A" or "B" in English IV	ENG 101	5	ENG 101

*Scores may be used for placement up to five (5) years from the date of the test.

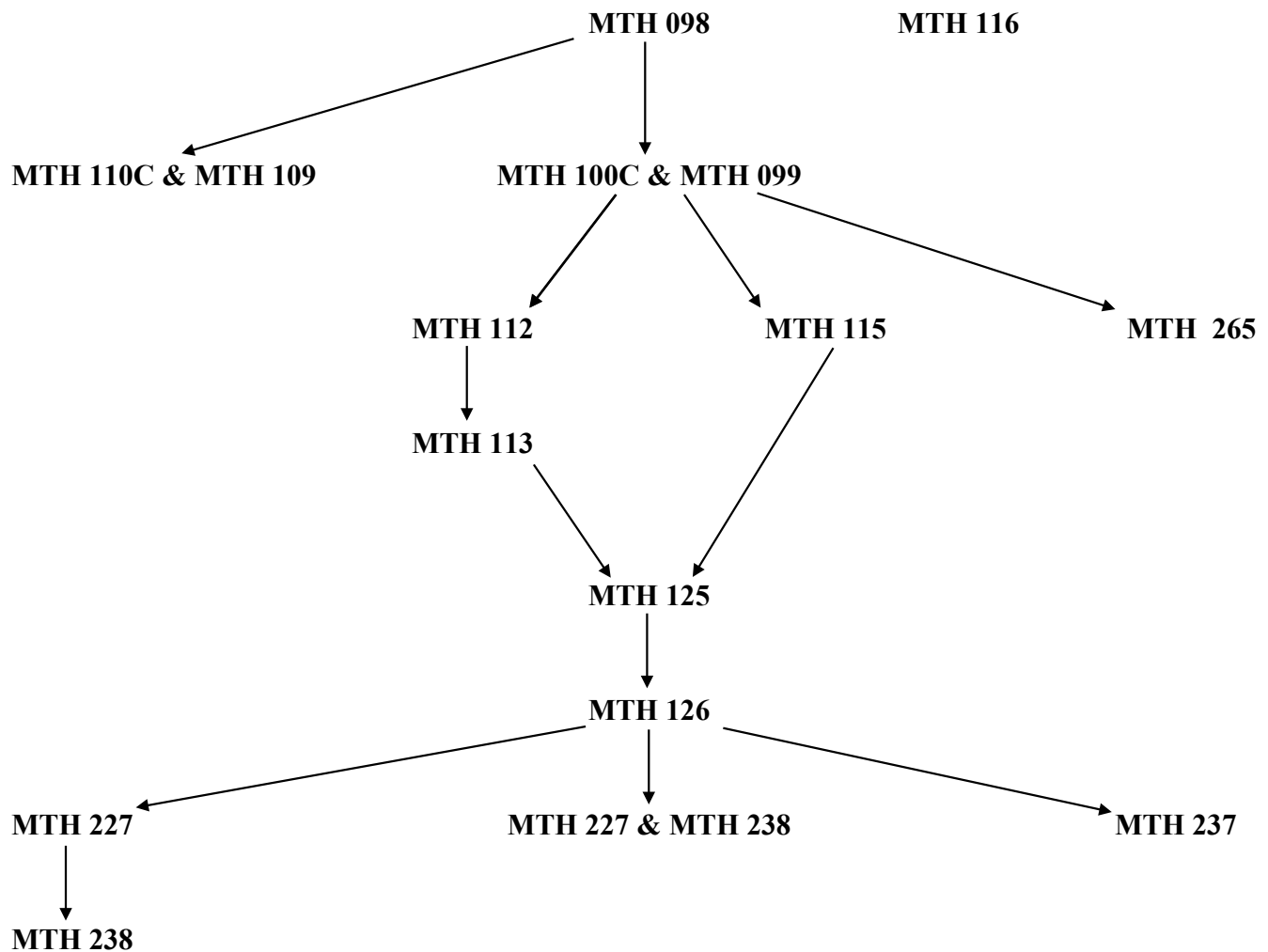
**English grade and GPA may be used for placement up to five (5) years from the high school graduation date.

Math Placement Chart

Screening Level 1: ACT Math Score		Screening Level 2: HS GPA and Math Grade		Screening Level 3: ACCUPLACER	
Score*	Placement	GPA/Math Grade**	Placement	Score*	Placement
Below 17	See SCREENING LEVEL 2	Below 2.75 GPA	See SCREENING LEVEL 3	QAS 200 – 242	MTH 098
17	MTH 100C & MTH 099 MTH 110C & MTH 109	2.75 or higher GPA and “C” in Algebra II	MTH 100C & MTH 099 MTH 110C & MTH 109	QAS 243 – 252	MTH 100C & MTH 099 MTH 110C & MTH 109
18 – 19	MTH 100 MTH 110 MTH 112C & MTH 111	2.75 or higher GPA and “A” or “B” in Algebra II	MTH 100 MTH 110 MTH 112C & MTH 111	QAS 253 – 266	MTH 100 MTH 110 MTH 112C & MTH 111
ACT Math Score of 20 or higher <u>and</u> HS Math Completed <small>(If ACT Math is below 20, then go back to Screening Levels 1 and 2)</small>		Course Placement		QAS 267 – 300	MTH 110 MTH 112
20 or higher <u>and</u>	Algebra I (HS1) with an A, B, or C	MTH 100 – Intermediate College Algebra MTH 110 – Finite Math		<p>MTH 116 – This course is non-transferable and does not complete the requirements for the AA or AS degree. It meets the math requirements for an AAS degree or certificate in the career technology fields. It does not require a placement score per the placement guidelines. Note that MTH 116 does not count as a pre-requisite for MTH100, MTH100C, MTH110, or MTH110C.</p> <p>MTH 110/MTH 110C – This course is transferable and meets the math requirements for the AA degree. Students who test into MTH 098 per the placement guidelines must complete the following pathway: MTH098-MTH110C or higher. Note that MTH 100/MTH 100C is not required in this pathway.</p> <p>MTH 112/MTH 112C – This course is transferable and meets the math requirements for the AA degree and the AS degree. Students who test into MTH098 per the placement guidelines must complete the following pathway: MTH098-MTH100C/MTH099-MTH112 or higher. MTH 110/MTH 110C are <u>not</u> prerequisites for MTH 112/MTH 112C</p>	
20 or higher <u>and</u>	Algebra II (HS2) with an A, B, or C	MTH 100 – Intermediate College Algebra MTH 110 – Finite Math MTH 112 – Precalculus Algebra MTH 231 – Math for Elementary Ed Teacher I MTH 232 – Math for Elementary Ed Teacher II MTH 265 – Elementary Statistics			
20 or higher <u>and</u>	Precalculus (HS3) with an A, B, or C or Calculus (HS4) with an A, B, or C	MTH 100 – Intermediate College Algebra MTH 110 – Finite Math MTH 112 – Precalculus Algebra MTH 113 – Precalculus Trigonometry MTH 115 – Precalculus Algebra and Trigonometry MTH 120* – Calculus and Its Applications MTH 125* – Calculus I MTH 231 – Math for Elementary Ed Teacher I MTH 232 – Math for Elementary Ed Teacher II MTH 265 – Elementary Statistics			
<p>*ACT math score of 25 or higher automatically places students into any math course.</p> <p>Scores may be used for placement up to five (5) years from the date of the test. Math grade and GPA may be used for placement up to five (5) years from the high school graduation date.</p>					



MATHEMATICS COURSE PROGRESSION



A math placement score is needed in order to place a student in the appropriate math class. Please refer to the math placement guidelines for further information.

Placement Guidelines

Screening Level 1: ACT Scores

- Always use ACT scores to first screen for placement. Ensure the ACT score is not over five (5) years old.
- Composite ACT scores **MAY NOT** be used for placement in math and English courses. Students with a score of 17 on the subject-matter ACT may qualify for exemption from the co-requisite placement based on GPA or Accuplacer Scores.
- For SAT equivalency, please contact the Admissions Office.

Screening Level 2: High School GPA and Grade Markers

- Always use Level 2 placement if an ACT score is below 17, is not available, or is over five (5) years old.
- This step can be skipped **ONLY** if a student has under a 2.75 GPA. You should then use Level 3 Placement (Accuplacer) to place the student.
- All high school GPAs and grades must be reviewed using official transcripts.
- High school GPA and grades earned cannot be older than five (5) years.

Screening Level 3: Accuplacer

- Never use the Level 3 placement unless a student did not clear Level 1 (ACT) and Level 2 (High School GPA with ENG/MTH Markers) screening.
- Only students with **LESS** than a 17 on the ACT and less than a 2.75 GPA should be tested via Accuplacer. Accuplacer may be used for students who do not have ACT scores or high school GPA information, or their information is over five (5) years old.

GED Pathway

- Effective June 7, 2019, an additional Pathway was created for GED students. Any student scoring 165 or higher on the GED *College Ready* exam is allowed to enroll in gateway courses, MTH 100 and ENG 101. The student does NOT take MTH 099 or ENG 099 unless the student voluntarily chooses to do so.

Mathematics Corequisite Course

If students place into MTH 098 and pass it with a grade of C or higher, do they move into MTH 100C with MTH 099 or can they skip MTH 099 and only enroll in MTH 100?

Students who successfully complete MTH 098 are required to enroll in MTH 100C with MTH 099.

What happens if a student fails MTH 099, but passes MTH 100C?

The student does not need to repeat MTH 099 and exits any additional corequisite learning support requirement.

What happens if a student fails MTH 100C, but passes MTH 099?

The student must repeat MTH 100C, but not MTH 099 (unless the student decides to retake MTH 099).

Can a student withdraw from MTH 099 and still stay in MTH 100C?

No. The student must stay in both classes or withdraw from both classes.

Will Financial Aid pay for the MTH 099 corequisite learning support course?

Yes. Pell grants will pay for MTH 099 as long as the student initially places in MTH 098 or MTH 100C with MTH 099. However, Pell grants may not cover the cost of a corequisite course if the student “self-places” in MTH100C and MTH 099.

English Corequisite Course

If students place into ENR 098 and pass it with a grade of C or higher, do they move into ENG 101C with ENG 099 or can they skip ENG 099 and only enroll in ENG 101?

Students who successfully complete ENR 098 are not required to enroll in ENG 101C with ENG 099. They can take ENG 101.

What happens if a student fails ENG 099, but passes ENG 101C?

The student does not need to repeat ENG 099.

What happens if a student fails ENG 101C, but passes ENG 099?

The student must repeat ENG 101C, but not ENG 099 (unless the student decides to retake ENG 099).

Can a student withdraw from ENG 099 and still stay in ENG 101C?

No. The student must stay in both classes or withdraw from both classes.

Will Financial Aid pay for the ENG 099 corequisite learning support course?

Yes. Pell grants will pay for ENG 099 as long as the student initially places in ENR 098 or ENG 101C with ENG 099. However, Pell grants may not cover the cost of a corequisite course if the student “self-places” in ENG 101C and ENG 099.